

HELP YOUR COMMUNITY, BECOME A VOLUNTEER



FIREBUSTER

OPEN HOUSE OCTOBER 9TH



Adults and children of all ages are welcome to attend and participate in this year's Open House activities. There will be refreshments, balloons, and prevention information available along with fire engine rides. Other events include the Junior Firefighter Challenge obstacle course and defensible space demonstration from ODF. Benton County Search and Rescue will be here, along with Philomath Police Department, NW Natural Gas,

Operation Life Saver, and Pacific Power with safety demonstrations. Carbon monoxide and smoke detectors will be given away. Plan to stop by and see what your Fire Department has to offer and meet the great men and women that volunteer their time to protect you and your property during emergencies.



BURN SEASON

The backyard burning seasons are March 1st to June 15th and October 1st to December 15th. It is important to call the Fire Department's Burn Advisory number at 929-5903 after 8:30am on the day you want to burn to find out what time burning is allowed that day, if at all. The Department of Environmental Quality (DEQ) regulates which days are open for burning and updates the advisory daily. Materials that can be burned include clean, untreated woody debris such as small branches, and yard debris once the ban has been lifted. You may also wish to receive the daily advisory by email. For the daily email advisory, please visit http://lists.mart.osl.state.or.us/mailman/listinfo/open_burn_announce. Simply follow the directions on the website. If you have any questions, please call Philomath Fire & Rescue at 929-3002 or Oregon Department of Environmental Quality at 1-800-349-7677 or Oregon Department of Forestry at 929-3266.

Address Posts.....Got one?

Do you live within the rural area of Philomath Fire & Rescues protection district? Do you have an address post?

Philomath Fire & Rescue is dedicated to provide you a quick response in case of an emergency. But we need your help in order to find you quickly. When is the last time that you have looked at your address post to see how clean it is? Dirty or obstructed address posts are very difficult to see at night and can cause problems in finding your home or your neighbors. Please take the time to clean off the post with simple soap and water so that we can find you and your neighbor easier. If your post has been damaged or is no longer upright, please call us and we will take care of the post. If you have questions, or would like to find out how to get a post, please call the main station at 929-3002.

Volunteers Needed

Philomath Fire and Rescue depends on volunteers to make sure we can respond to medical and fire emergency calls in the community. Our Fire District covers 68 square miles and serves a population of over 9,000 residents. If you think you have what it takes to make a real difference in your community, contact us.

In 2009, we responded to 566 emergency calls. We rely on our cadre of 36 volunteer fire and EMS responders to provide the manpower to cover the needs of the community. In addition to emergency response, our volunteers provide medical and fire standby at events, help with fire and life safety education around the community and attend regular training to keep their skills and knowledge current. We really need volunteers in our substation areas in Wren and the Inavale area. If you live south of Airport Road or in the community of Wren, you could be the difference between a local response or waiting until a crew comes out from town. The time you can save could make all the difference.

Philomath Fire and Rescue has two volunteer programs available. You can choose to become a Fire Volunteer or an EMS Volunteer. We will provide you with the equipment and training necessary to make a positive impact. If you have questions you can contact us at 541-929-3002 during business hours or email me at tom.phelps@philomathfire.com. We can't do this without capable, willing volunteers. Come and join our team. Help out the community, become a volunteer! Chief Phelps.



Website

The department will soon have a website up for the public to view at www.philomathfire.com. The goal is to be able to share information with the public about fire safety and provide up-to-date information on activities to the public.

Chimney Fire Prevention



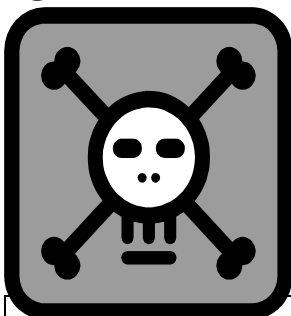
As the weather begins to change, please take the time to clean your chimney and flue pipes. If you have a wood heat source, you should:

Check and clean your flue at least three times during the cooler months.

Try to burn seasoned/dry wood. Dry wood burns cleaner and warmer!

The Philomath Fire Department has conventional flue brushes and pellet stove flue brushes available for you to borrow. If you have any questions or concerns regarding the safety of your wood stove, or if you would like to borrow a chimney brush, please call or stop by the Philomath Fire at 1035 Main St.

Cooperative Training



Philomath Fire & Rescue members (from right) Zack Hittner, Miranda Funk and Ken Corbin

The City of Philomath hosted a multi-agency drill at their water treatment facility on Bellfountain Road in September. The drill was attended by Philomath Fire & Rescue, Lebanon Fire District, Corvallis Fire Department, Benton County Sheriff's Office, Philomath Police Department and Philomath Public Works. The Corvallis and Lebanon personnel attended as members of the Regional Hazardous Materials Response Team. The drill involved a simulated chlorine gas leak which required cordoning off the area, evaluating the need for evacuations, sending a team in to repair the leak and decontamination procedures. Garry Black and Dennis Lewis with Philomath Public Works gave us a tour of the property and facilities. They reviewed the systems they have in place and their daily routine for ensuring that everything is running safely and smoothly.

A FEW NEW FACES AT THE STATION



Caitlyn Dollar is employed by Timber Hill Athletic Club in Corvallis. She is attending LBCC to earn her EMT Basic and looks forward to using her skills. In her spare time she like to watch football and fishing. She wants to further her education and become a paramedic.

Andrew Cooper comes to us as a community EMS volunteer. After attending two different Universities, he decided to follow his dream to be an EMT. While working on his EMT Basic, his instructor recommended Philomath and he is excited to get going and use his skills.

Levi Schell joins us to be a volunteer firefighter. Levi and his wife of 11 years have four wonderful children. He has lived in the area since birth and in Philomath since 1999. Levi currently works as a welder for CTC.

A prior wildland firefighter, Joseph Waite has began his training to become a volunteer fire fighter with us. He, his wife, and new baby recently moved to Philomath. Although he is no stranger to the area, he graduated from OSU. He works for T. Gerding Construction as a project engineer.

Mary Gaughan loves to garden and landscape. Born in Eugene, she became a master gardener in 2000. After a nine years in Corvallis, she moved to Philomath in 1996. She has been married for 29 years with four children. She says she is ready for the challenge of being a firefighter.

Ian Pettengill is our newest resident volunteer. He graduated Archbishop Riordan High School in San Francisco in 2004. Ian is currently enrolled to become a Paramedic. His goals are to become a Pumper and Aerial Operator.

No Picture



Joe Brier lives in Wren with his wife Kathy and dog. He has been a Firefighter/Paramedic for the City of Albany for the last 6 years and worked in the Portland Metro area prior to that. He has been a Paramedic for 13+ years; graduated from Chemeketa Community College in 1997. Prior to moving to Wren he was a volunteer with Monitor Fire District, outside of Woodburn, for 16 years. He is also an avid Beaver's fan which works well since his wife works for the University's athletic department. Both he and his wife enjoy outdoor activities in their free time.

Available

Emergency and Home Preparedness

The news is regularly reporting how people's lives are being altered because of a disaster that swept through a community. In our area, we do not always have forewarning that a disaster is going to strike, but we can take advantage of what other communities have learned and try and make ourselves more prepared to face what disasters may come our way.

There are many resources available to you as a consumer. Benton County Emergency Management has suggested lists of supplies to have on hand in case of a power outage or to carry in your car, in case you get stuck when traveling around. Their website is www.co.benton.or.us/sheriff/ems/index.php

Philomath Fire and Rescue is also willing to come to your home to help you evaluate it for fire hazards and home safety hazards. It is important to have visible address numbers, so we can find you day or night and unobstructed entrances to your home. Please feel free to call if you feel you could use assistance in assessing your home or business. Your safety is our concern.

NEW TRUCK FOR THE COMMUNITY



Philomath Fire & Rescue has purchased a used ladder truck from the Corvallis Fire Department. The Ladder Truck is a 1982 Grumman that was built as a demonstration unit. It traveled around the country until 1988 when the Elk Grove (CA) Fire Department bought it. It served in Elk Grove until the Corvallis Fire Department bought it in 1998, and has been in service until recently when they received their new Ladder Truck. The Ladder Truck has a 9 KW diesel generator, ground ladders, a 1250 gpm pump with a 200 gallon water tank. The Grumman Ladder Truck can be used fully extended (95') and be used at any angle with 1000 LBS in the basket. This apparatus is replacing a 1978 Seagraves that is currently in service. The Seagraves has been donated to Burns Fire Department. In 1998, the

Corvallis Fire Department sold the Seagraves to Philomath Fire for \$1. We are currently training on the "new" ladder truck which includes behind the wheel time for operator training, so if you see it around town, they are probably doing driver's training.



Use Your Fireplace and Wood Stove Safely!

With cold weather is upon us! Many of us will use our fireplaces and wood stoves as either a primary or supplemental heating source in our home. Unfortunately, too many people are unaware of the fire risks involved when using these heating methods. Philomath Fire & Rescue encourages you to practice the following fire safety tips to keep your fireplace or wood stove fire burning safely:

- Have your wood burning appliance properly installed, permitted, and inspected prior to use
 - Have your fireplace, wood stove and chimney cleaned annually for creosote build-up. Inspect for cracks in mortar or chimney flues
 - Keep the hearth area clear of decorations, debris and combustible materials
 - Always use a metal mesh screen with your fireplace
 - Never use flammable liquids to start a fire
 - Only a competent adult should start and supervise a fireplace or wood stove fire
 - Use only seasoned wood
 - Build small fires that burn completely and produce little smoke
 - Do not exceed the fuel capacity of your fireplace or wood stove
 - If using manufactured fire logs, follow all of the manufactures directions
 - Do not use manufactured fire logs as a starter log or with other wood or fuels
 - Do not exceed safe operating temperatures, allow your fireplace, wood stove, chimney and stovepipes to cool
 - Never burn cardboard, paper, trash, charcoal or debris in your fireplace or wood stove
 - Always supervise kids and pets around a fireplace or wood stove
 - Place hot ashes in a separate metal container outside your home, away from decks, landscape materials and other combustibles, and soak them with water
 - Store firewood away from the fireplace and at least 30 feet away from your home
 - Make sure that the roof is clear of leaves, pine needles and other debris
 - Always use a metal mesh screen spark arrester on your chimney
 - Remove branches hanging above chimneys, flues or vents
 - Install both smoke alarms and carbon monoxide alarms on every level of your home, at all sleeping areas, test them monthly
 - Never ignore smoke alarm or carbon monoxide alarm activations when using a fireplace
 - Develop and practice a home escape plan
 - Did you know that putting your Christmas tree in the fireplace can cause a fast and very dangerous flash fire?
- Most fires related to supplemental heating are caused by improper **installation, maintenance or use** of the heating source. Careful operation is crucial to the safety of you and your family. If you have a fire in your house, **Get Out And Stay Out!** Call the fire department from a safe location and never go back inside. Home fireplaces and wood stoves are a wonderful addition to any environment. Using your common sense and following these easy guidelines will guard against disaster and ensure a positive fire experience.

PHILOMATH FIRE & RESCUE CELEBRATES IT'S 80TH ANNIVERSARY

In 1906, fire apparatus was purchased by the City of Philomath. The apparatus included a hose cart, along with 500 feet of 2 ½ hose, 2 play pipe smooth bore nozzles and spanner wrenches for \$540. The hand- drawn apparatus was the city's only means of defense at this time. The City had only four fire hydrants, which were supplied by the Corvallis watershed. Townsfolk would roll the hose cart to the hydrant closest to the fire, connect up to it and then run towards the fire with hose. If you lived within 450 feet of a hydrant, chances were you might have something left to move back into. For those who lived outside of 500 feet, it was garden hoses and Bucket Brigades.

On March 19, 1930, a meeting was held under the direction of Roy Scott, a one-time pool hall owner, who saw the need for an organized fire department. He, himself, was nearly burned out of a business. That very night, 19 volunteers signed up to form Philomath's Fire Department and Roy Scott became our first Fire Chief.

Chief Scott envisioned the need for a motorized fire vehicle. The volunteer firemen canvassed Philomath for donations, and held fundraisers to collect enough money to purchase a Chevrolet truck chassis, and other equipment to build Philomath's first fire truck, our very own, "Old Number One!" Upon completion, this fire apparatus would give homes and other structures a fighting chance for survival, inside the city limits and out in the rural area.

In the 80 years that Philomath Fire and Rescue has been in existence, there have been 10 individuals that have served in the capacity of Fire Chief. They were Roy Scott (1930-40; 1948-59) L C "Jack" Rees (1940-45); Hubert Hathaway (1945-48); Bob Morgan (1959-76); James Stinson (1976-80); Keith Boggs (1980-81); David Harlacher (1981-87); Dennis Schiedler (1987-93); Dale Staib (1994-2007); and Tom Phelps (2007-present).

Philomath Fire and Rescue still relies heavily on volunteers to help respond on emergency medical and fire responses in the District. Currently there are 6 paid firefighter/EMT's, one paid EMS responder and an Administrative Assistant. There are 27 volunteer firefighter/EMT's and 7 volunteer EMS responders with the District. Philomath Fire and Rescue accepts applications for volunteer positions and holds academies two times a year to train new volunteers. The department will soon have a website up for the public to view at www.philomathfire.com. The goal is to be able to share information with the public about fire safety and provide up-to-date information on activities of the department.

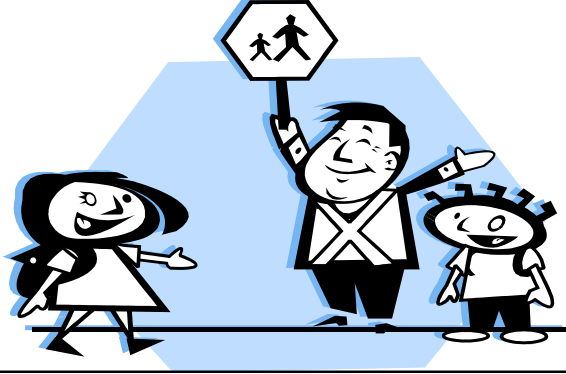
Live trees and other holiday decorations call for added safety measures



Trees, lights and candles become more prominent in our homes and businesses at this time of year. But it is important to not overlook the dangers that holiday decorations can present. Live trees present a significant fire hazard and must be used carefully.

If you choose a natural-cut tree, make sure you are taking care of it. Keep it watered daily, don't put it near a heat source, never use an open flame such as a candle on a tree, and once the holidays are over, removed the tree safely from your home. And do not dispose of the tree by burning it in your fireplace in your home.

Remember that candles close enough to the tree can be a fire hazard. The tree should be placed in a stand strong enough to support it. You should also use approved lights with a recognized label, usually UL or Underwriters Laboratories, this demonstrating that they are safe.



Walk and Bike to School Day!

To kick off the new Philomath Safe Routes to School Walk and Bike to School Days for the 2010-11 school year we will be joining millions of students around the world walking and biking to school on October 6 for International Walk + Bike to School Day. Students who walk, bike or ride a scooter to school on October 6 will receive a reward for their participation. Additionally, classes will receive rewards based on percentage of participation. A schedule of monthly Walk + Bike to School days will be posted on a monthly basis.

Please help make the Walk and Bike to School Day a successful one by keeping our children safe following Oregon's Crosswalk Laws. Here's what you need to know:

- When turning at a traffic signal or at any other crosswalks that are marked with paint or unmarked, drivers must stop and remain stopped for pedestrians until they have cleared the lane into which your vehicle is turning and at least 6 feet of the next lane.
- Stop and remain stopped for students as you are directed by a crossing guard.

PHILOMATH FIRE & RESCUE BOARD OF DIRECTORS

President - Tom Ries **Vice President** - Larry Sleeman **Secretary** - J. Reed Glasmann **Members** - Ruth Jacobs & Angie Baca

The Board of Directors meet monthly to discuss the business of the District on the first Monday of the month. The public is welcome to attend these meetings. Contact the fire station @ 929-3002 to find out the time and location of the next meeting.

The Firebuster is an official newsletter published by Philomath Fire & Rescue. Inquiries should be made to the newsletter staff:

Firebuster, Philomath Fire & Rescue, P.O. Box 247, Philomath, OR 97370.

FireBuster Contact: Ray Hubbell - Phone 541-929-3002 Email: ray.hubbell@philomathfire.com